



► 2026 | EXHIBIT PROSPECTUS

# SPIE. ASTRONOMICAL TELESCOPES+ INSTRUMENTATION

**Exhibition Dates: 7-9 July 2026**  
**Conference Dates: 5-10 July 2026**

Bella Center Copenhagen  
 Copenhagen, Denmark

RESERVE YOUR EXHIBITION SPACE TODAY

## Connect with customers in Copenhagen.

### A great place to do business

Attendees come to this event to meet with the top global suppliers of components, instruments, and imaging systems for astronomy applications. Join the exhibition to showcase your products to new prospects and key decision-makers tasked with enhancing their capabilities and advancing their projects.

### Exhibit in Copenhagen

Connect with customers and build relationships with new prospects.

- Grow revenue
- Identify the most promising opportunities in the industry
- Demo your new products
- Gain exposure with strategically placed advertising and available sponsorships

**100+**  
 Exhibiting Companies

### For more information about exhibiting, sponsorships, and advertising, contact the SPIE sales team:

*In the Americas and rest of world*



**Kim Abair**  
 +1 360 685 5499  
 kima@spie.org



**Lacey Barnett**  
 +1 360 685 5551  
 laceyb@spie.org



**Melissa Valum**  
 +1 360 685 5596  
 melissav@spie.org

*In Europe and Asia*



**Laurence Devereux**  
 +44 29 2278 9031  
 laurence@spieeurope.org

MOVING TECHNOLOGY TO MARKET™

# SPIE. ASTRONOMICAL TELESCOPES + INSTRUMENTATION

## Plan to participate in Copenhagen, Denmark

**Exhibition Dates: 7-9 July 2026**  
**Conference Dates: 5-10 July 2026**

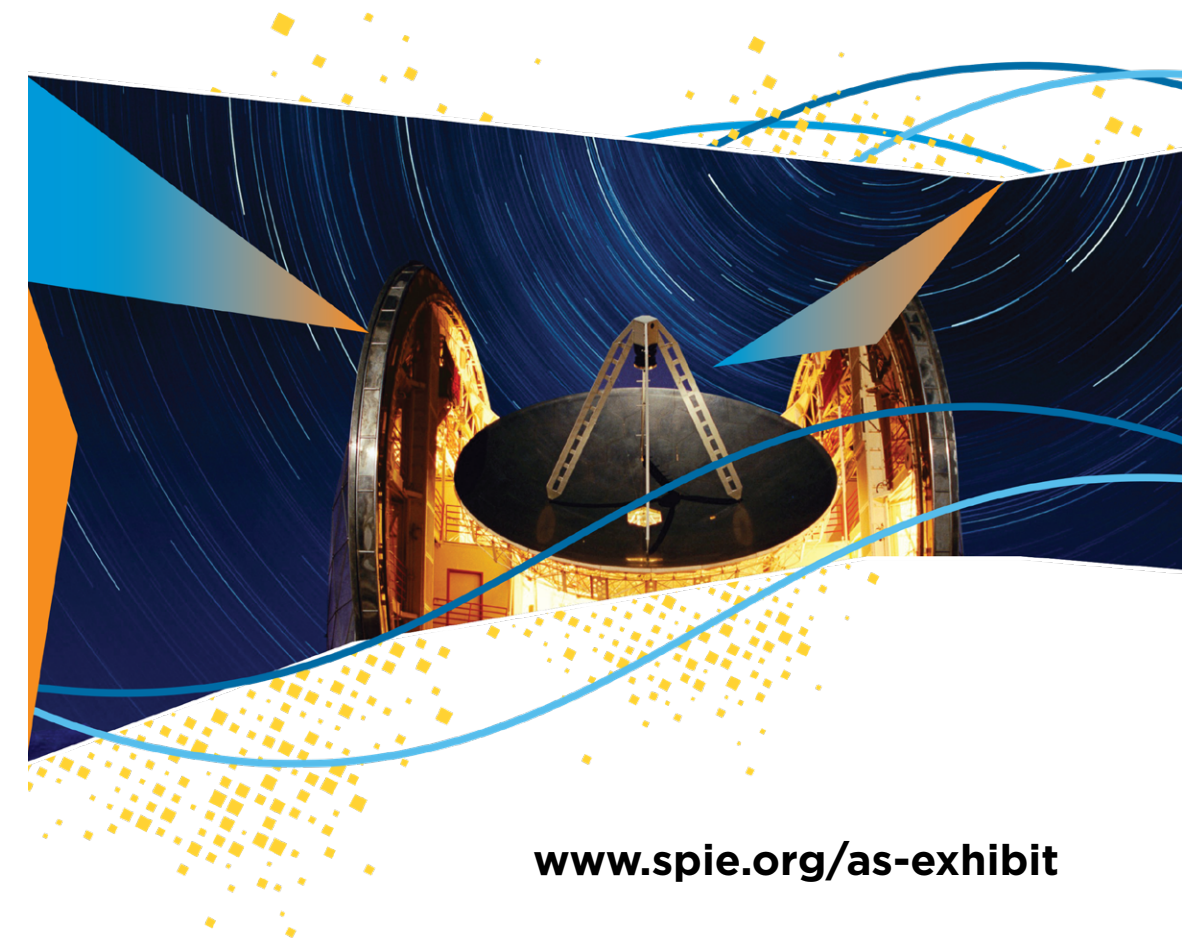
Bella Center Copenhagen  
 Copenhagen, Denmark

This exhibition is the leading exchange for professionals coming together to find new products and make business connections. A week of technical presentations, courses, and special events offer opportunities for connecting with potential customers. Learn more about exhibiting and sponsorship options for 2026.

Sponsorship opportunities available for exhibitors.

**Sign up today and become an exhibitor**

[www.spie.org/as-exhibit](http://www.spie.org/as-exhibit)



[www.spie.org/as-exhibit](http://www.spie.org/as-exhibit)



## Benefits of exhibiting at **SPIE Astronomical Telescopes + Instrumentation 2026**

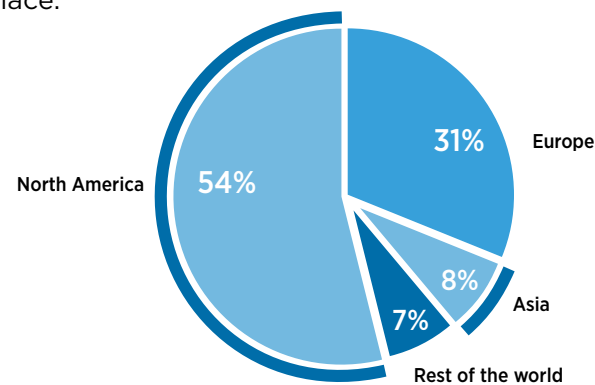
Exhibition: 7-9 July 2026 • Conferences and Courses: 5-10 July 2026  
Bella Center Copenhagen • Copenhagen, Denmark

### It's focused

Join the key event that drives the future of astronomical telescopes and instrumentation.

### It's global

Meet astro-engineer buyers and project managers from Europe, North America, and Asia in this highly collaborative and international marketplace.



Based on historical data

### It's essential

Future telescope projects depend on a growing range of tools and component equipment that utilizes the most advanced technology. Attendees are looking for the following.

- Cameras and imaging systems
- Sensors and detectors
- Optical components and fabrication
- Filters, mirrors, lenses
- Software for design and simulation
- Test and measurement equipment
- Computing, data processing hardware
- Optical coatings and thin films
- Positioning equipment
- Spectroscopy devices
- Vibration isolation equipment
- Laser components and accessories
- Signal analysis equipment

### Show your leadership

Find the sponsorship that fits your needs and budget. Opportunities range from receptions and plenary sessions to lanyards, visibility within the conference app and on the web, and more. Review the sponsorship contract online for a full list of options and pricing.



#### 2026 Exhibition dates and hours

Tuesday 7 July ..... 10:00-17:00  
Wednesday 8 July ..... 10:00-17:00  
Thursday 9 July ..... 10:00-14:00



## Meet your target audience. Generate business.

Our sales staff will work with you to cost-effectively boost your company's visibility and connect you with prospective customers.

Space Type	Non-Member	SPIE Corporate Member
Table Display .....	\$3,630.00 .....	\$3,085.50
Shell Stand (9 sqm) .....	\$5,033.00 .....	\$4,278.05
Island** .....	\$.645 per sqm.....	\$.548.25 per sqm

\*\*Increments of 9 sqm, 36 sqm minimum  
SPIE Corporate Member rates reflect a 15% discount. View the full contract online.

### Take advantage of promotional opportunities

- Exposure to the latest technical advances—non-author pass(es) to technical program included with your exhibit space
- Networking opportunities—including coffee breaks and the Welcome Reception
- Advertising opportunities—in event programs, as well as product announcements online
- Sponsorship opportunities
- Collaboration with leading researchers; face-to-face connections
- Access to space for your corporate events, product training, or user-group meetings



Reserve your exhibition space today:  
[www.spie.org/as-exhibit](http://www.spie.org/as-exhibit)

